



MX100 Series

Lavalier Microphones

Online user guide for Shure Microflex MX100 Series lavalier microphones.
Version: 3 (2019-J)

Table of Contents

MX100 Series Lavalier Microphones	3	Preamp Gain	5
General Description	3	RFI Filtering	5
Interchangeable Cartridges	3	General Rules for Lavalier Microphone Use	5
Windscreen	4	Tie Clip	5
Foam Screen	5	Specifications	6
Snap-Fit Windscreen	5	Certifications	7

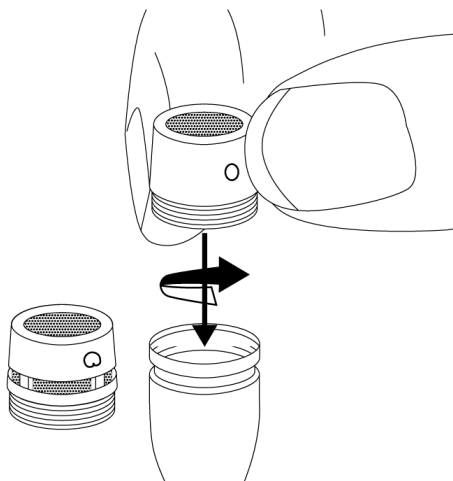
MX100 Series Lavalier Microphones

General Description

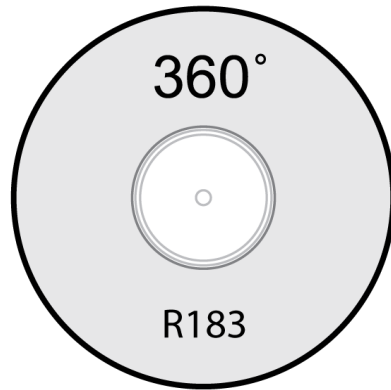
Shure Microflex[®] MX100 Series microphones are wired lavalier electret condenser microphones designed for speech and vocal pickup, general purpose sound reinforcement, recording, and remote monitoring applications. They can be clipped to neckties, lapels, and other articles of clothing. Interchangeable cartridges make it possible to easily reconfigure microphone coverage as the need arises.

- Wide dynamic range and frequency response for accurate sound reproduction
- Interchangeable cartridges that provide a choice of polar pattern for each application
- Rotatable tie-clip that pivots in 90° increments for placement flexibility
- Dual tie-clip and belt-clip preamp
- Supplied with snap-fit foam windscreen that controls breath noise
- Balanced, transformerless output for increased immunity to noise over long cable runs
- RF filtering

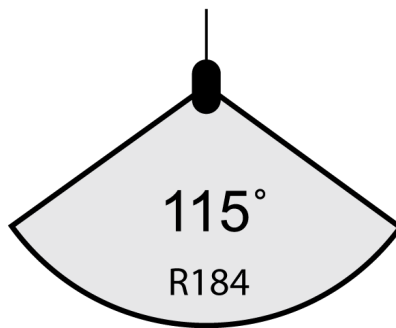
Interchangeable Cartridges



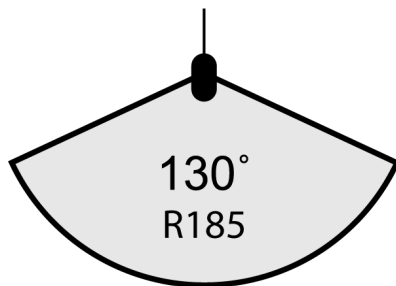
Microflex microphones use interchangeable cartridges that allow you to choose the polar pattern for different installations.



Omnidirectional



Supercardioid



Cardioid



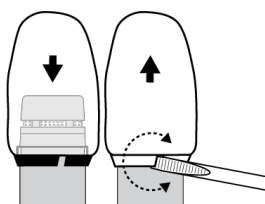
Windscreen

Foam Screen

Slip the windscreen over the top of microphone so it covers side slots. The foam windscreen provides 5 to 10 dB of "pop" protection.

Snap-Fit Windscreen

- Snap into the groove below the cartridge.
- To remove, spread the gap with a screwdriver or thumbnail.
- Provides 30 dB of "pop" protection.



Preamp Gain

If necessary, the preamplifier gain can be reduced by 12 dB. Contact an authorized Shure service center for information.

RFI Filtering

Important: Microphones must be used with the RK100PK or RK202PK plate-mounted preamp to optimize RF immunity.

General Rules for Lavalier Microphone Use

- Attach the microphone approximately 76 mm to 152 mm (3 to 6 in.) below the neckline for the best sound.
- Do not cover the microphone with your hand or clothing.
- Use one of the supplied windscreens to minimize wind and breath noise.
- If four or more microphones will be active at any given time, use of an automatic mixer, such as the Shure SCM810 or SCM410, is recommended.

Tie Clip

Insert the top of the microphone through tie clip loop from below until tie clip loop snaps into place over the lower groove on the microphone.

Specifications

Type

Electret Condenser

Frequency Response

50–17000 Hz

Polar Pattern

MX183	Omnidirectional
MX185	Cardioid
MX184	Supercardioid

Output Impedance

180 Ω

Output Configuration

Active Balanced

Sensitivity

@ 1 kHz, open circuit voltage

Cardioid	-35 dBV/Pa(18 mV)
Supercardioid	-34 dBV/Pa(21 mV)
Omnidirectional	-28 dBV/Pa(42 mV)

1 Pa=94 dB SPL

Maximum SPL

1 kHz at 1% THD, 1 k Ω load

Cardioid	124 dB
Supercardioid	123 dB
Omnidirectional	117 dB

Self Noise

A-weighted

Cardioid	28 dB SPL
Supercardioid	27 dB
Omnidirectional	21 dB SPL

Signal-to-Noise Ratio

Ref. 94 dB SPL at 1 kHz

Cardioid	66 dB
-----------------	-------

Supercardioid	68 dB
Omnidirectional	74 dB

Dynamic Range

1 k Ω load, @ 1 kHz

96 dB

Common Mode Rejection

10 Hz to 100 kHz

45 dB, minimum

Clipping Level

at 1% THD

–6 dBV (0.5 V)

Polarity

Positive sound pressure on diaphragm produces positive voltage on pin 2 relative to pin 3 of output XLR connector

Environmental Conditions

Operating Temperature	–18–57°C (0–135°F)
Storage Temperature	–29–74°C (–20–165°F)
Relative Humidity	0–95%

Power Requirements

11–52 V DC, 2.0 mA

Cable

1.2 m (4 ft)

Certifications

Meets essential requirements of all applicable European Directives.

Eligible for CE marking.

Note: Testing is based on the use of supplied and recommended cable types. The use of other than shielded (screened) cable types may degrade EMC performance.

The CE Declaration of Conformity can be obtained from Shure Incorporated or any of its European representatives. For contact information please visit www.shure.com

The CE Declaration of Conformity can be obtained from: www.shure.com/europe/compliance

Authorized European representative:

Shure Europe GmbH

Headquarters Europe, Middle East & Africa

Department: EMEA Approval

Jakob-Dieffenbacher-Str. 12

75031 Eppingen, Germany
Phone: +49-7262-92 49 0
Fax: +49-7262-92 49 11 4
Email: info@shure.de